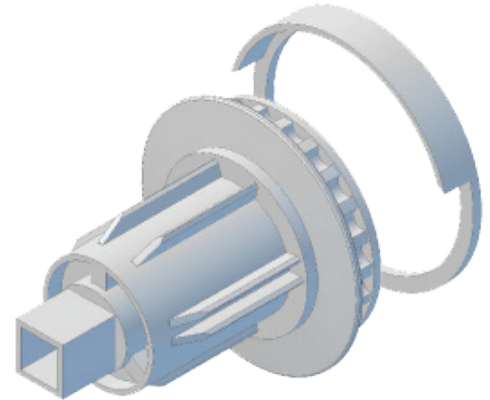


New product

JAI Geared Chain Mechanism

Introducing the new JAI Geared Chain Mechanism

The most elegant lift assistance solution for large roller blinds.



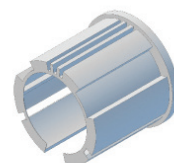
No more spring assists!

The JAI Geared Mechanism is an all-in-one solution which renders spring assists obsolete.

A planetary gearing system within the mechanism significantly reduces the pull force required to lift large blinds.

System features and benefits:

- ✓ Delivers comfortable pull force for end users with blinds as wide as 5m by 2.4m drop – see our data for more info
- ✓ Fits straight into 38mm tube or pair with tube adapters for other tube sizes
- ✓ Innovative fast chain loading system – simply loop the chain over and press the cover closed.
- ✓ Identical direct drive mechanism also available for jobs with a mix of large and small blinds for uniform visual appearance.
- ✓ New bracket cover design hides all bracket screw holes completely from view and is shaped to blend with the streamlined contours of the mechanism.
- ✓ Ball stoppers may still be used to protect the blind by following our loop size guide.
- ✓ Extension brackets available for blinds with long drops
- ✓ Linking brackets with their own unique covers available



Use with adapters for 45mm or 55mm tube



New covers hide bracket screw holes from view